

 **rs barcelona**

customisation guide usa

Valid from May 2024

Let's make it unique

*We enjoy working with you.
You know what you want.
We bring our experience.
Together, we create something special.*

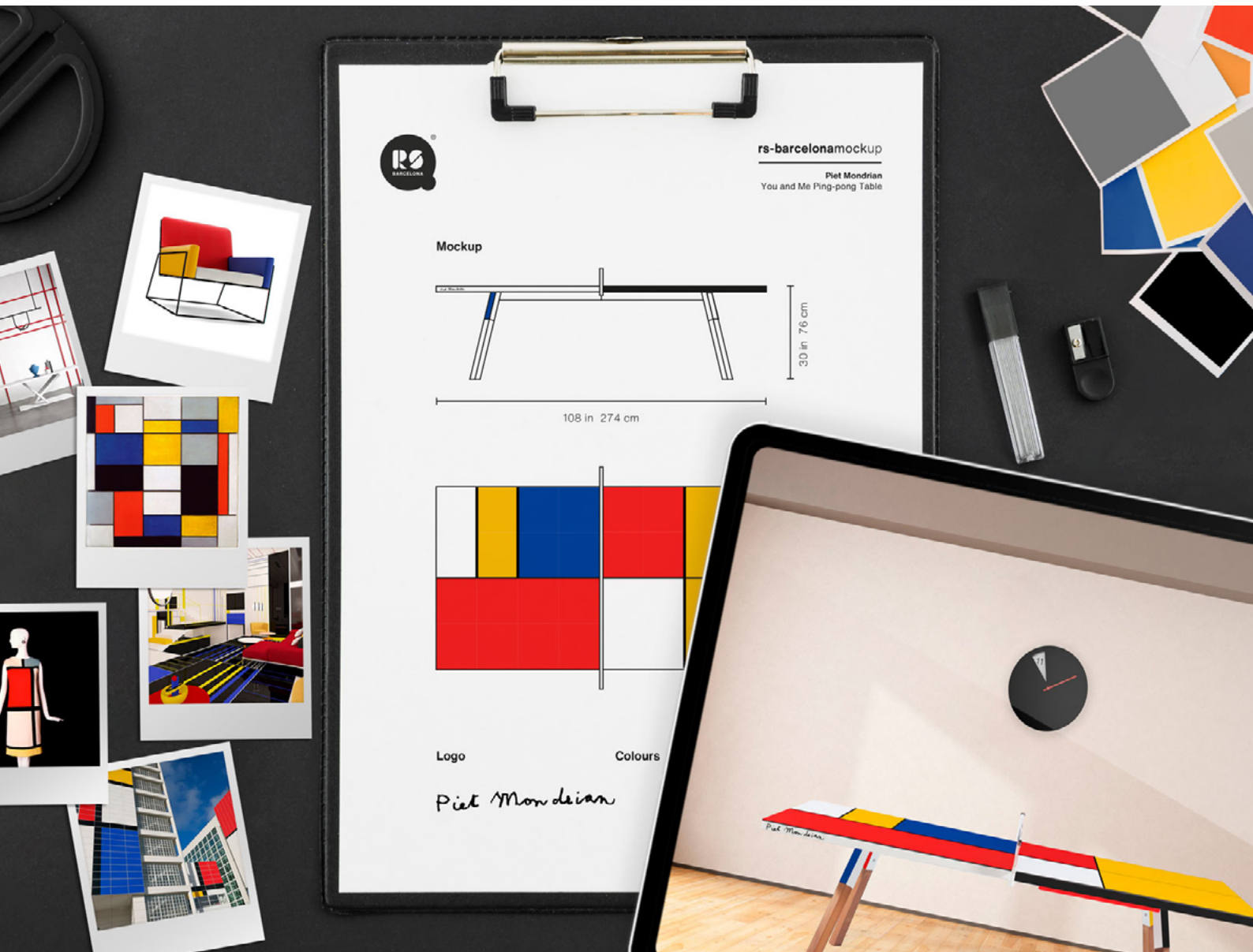
Attention to detail. To make your product even more special, we can fully customise it for you.

Our manufacturing and warehouse team controls the entire production process, which means we can modify all the products in our collection, adapting them to your projects and needs, or (and why not?) to your whims.

We enjoy working with our customers and collaborators. Because together we can create that special concept, that bespoke item you're looking for.

A corporate colour; a longer table or one with higher legs; a springier cushion; or simply the addition of a logo. These big or little modifications are what make you feel that this product is yours and yours alone.

That it's unique. For you. For your customer.



We're designers and manufacturers

Each product is the sum of unique moments.

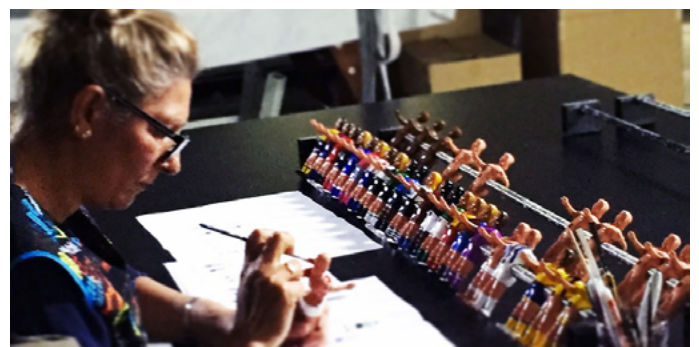
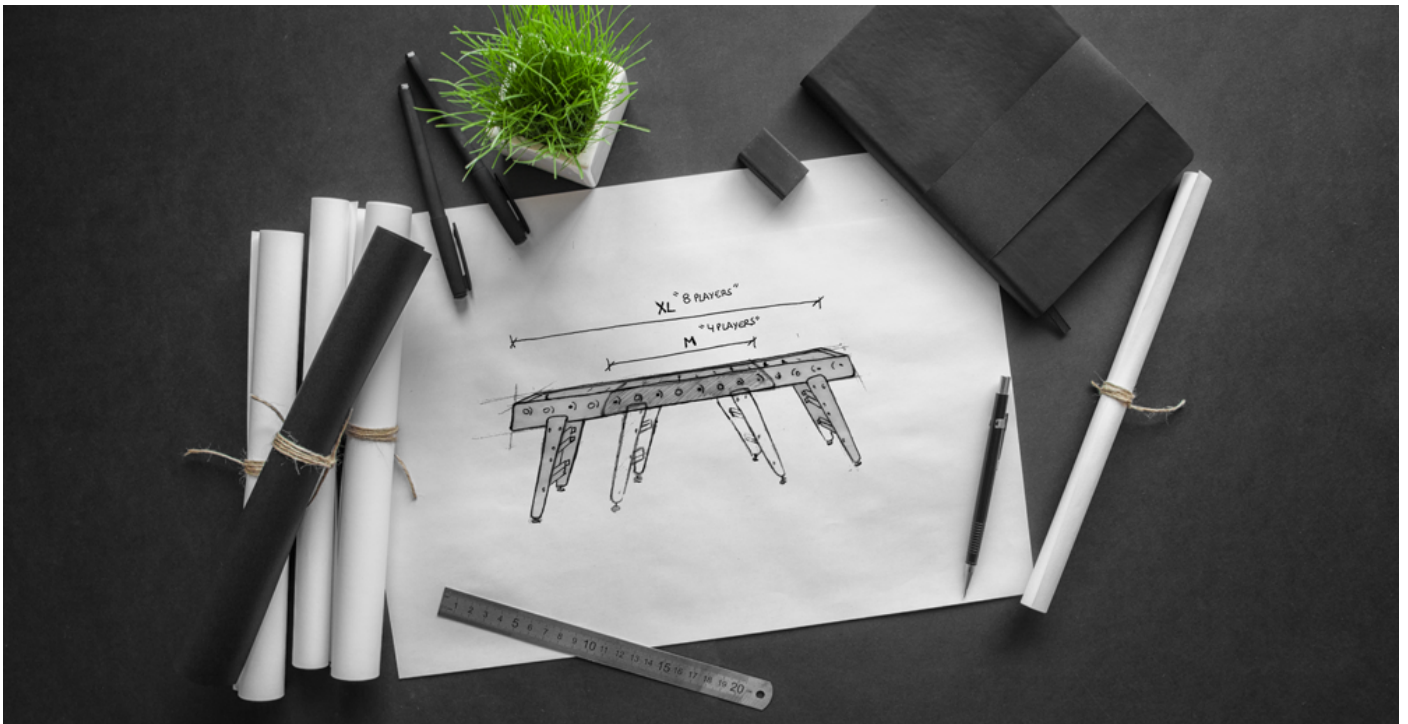
Like the magical encounter between craftsmanship and industrial manufacturing.

The spark of inspiration. The fledgling idea. The first rough sketches. The countless test designs on paper. The fine details of craftsmanship, the precision of industrial manufacturing and cutting-edge technology all come together.

We design in partnership with internationally renowned designers and emerging young talents. A superb blend of experienced knowhow and fresh impetus.

Years and years of metalwork experience, working hand in hand with local suppliers to come up with the best materials and the smartest solutions to manufacture our products.

Products we make ourselves. With our own hands. At our own production facilities. Products made in Barcelona.



What do you need?

We design and manufacture hardwearing products that can handle the demands of any project, while giving it a playful and friendly attitude.

We know that every project is unique, requiring specific and dedicated solutions. Contract settings demand hardwearing products that can handle sustained use and plenty of intense living. That's why we manufacture products to be used and enjoyed with no expiry date.

And if you don't find the products that fulfil your project needs, we do it for you. We can also start from scratch. All we need is a briefing session or an idea. We love challenges. So, take the plunge.

Let's work together. Make the most of the experience and knowhow of our team. We'll try to guide you and give shape to your ideas and design. If you can imagine it, we can make it for you.





Custom Diagonal Pool Table

Find below all the steps to choose your Custom Diagonal pool table.

1. Choose the size, use (indoor or outdoor), structure colour and cloth of the pool table.

no extra cost



American 7ft



American 8ft

indoor structure

- white
DIPTA7-1N-CST
- black
DIPTA7-2N-CST
- red
DIPTA7-3N-CST
- blue
DIPTA7-4N-CST
- green
DIPTA7-5N-CST

indoor cloth

- grey
PT7CLOIN-1-CST
- black
PT7CLOIN-2-CST
- burgundy
PT7CLOIN-3-CST
- grey blue
PT7CLOIN-4-CST
- classic green
PT7CLOIN-5-CST

indoor structure

- white
DIPTA8-1N-CST
- black
DIPTA8-2N-CST
- red
DIPTA8-3N-CST
- blue
DIPTA8-4N-CST
- green
DIPTA8-5N-CST

indoor cloth

- grey
PT8CLOIN-1-CST
- black
PT8CLOIN-2-CST
- burgundy
PT8CLOIN-3-CST
- grey blue
PT8CLOIN-4-CST
- classic green
PT8CLOIN-5-CST

outdoor structure

- white
DIPTOUA7-1N-CST
- black
DIPTOUA7-2N-CST

outdoor cloth

- natural
PT7CLOUT-1-CST
- carbon
PT7CLOUT-3-CST
- black
PT7CLOUT-2-CST

outdoor structure

- white
DIPTOUA8-1N-CST
- black
DIPTOUA8-2N-CST

outdoor cloth

- black
PT8CLOUT-2-CST
- carbon
PT8CLOUT-3-CST
- natural
PT8CLOUT-1-CST

Standard legs come always in **iroko** wood.



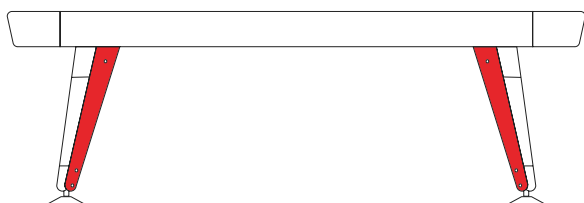
DIPTA4LEGIR-CST

Find below the Diagonal pool table customisation options. All options have an extra cost informed as follows.

2 • Legs

Change the iroko wood of the legs to walnut, oak or painted wood (lacquered or stained).

\$ 935



walnut
DIPTA4LEGW-CST



oak
DIPTA4LEGK-CST



painted or lacquered
DIPTALEGCOL-CST

Custom Diagonal Pool Table

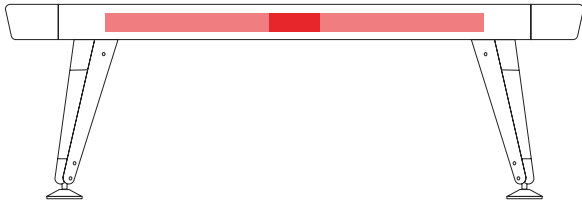
Find below the Diagonal table customisation options. These options have an extra cost informed as follows.

3. Vinyl logo on the frame

Add your logo or any image printed on vinyl on the Diagonal frame.
Maximum dimensions: 60x3 cm | 23.6x1.18 in.
Price per 1 vinyl/1 side.

PTVINYL-STD

\$ 420



4. Frame

4.1. Choose a colour from the RS-Barcelona chart for the body and the legs frame.
(Check out our metal colour chart on page 33).

DIPTACOLOR-CST

\$ 920



4.2. Choose any specific RAL colour (subject to colour availability).

DIPTACOLOR-SPC

\$ 1.500



Custom Diagonal Pool Table

Find below the Diagonal pool table customisation options. These options have an extra cost informed as follows.

5. Cloth • Change cloth colour

Subject to cloth colour availability.

(See pages 42 and 45 – Cloth colour chart for Diagonal indoor use, and pages 46 and 47 – Cloth colour chart for Diagonal outdoor).

Outdoor

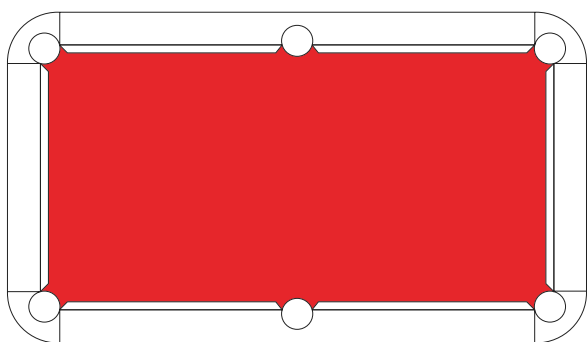
6 ft	PT6CLOCOLOU-SPC
7 ft	PT7CLOCOLOU-SPC
8 ft	PT8CLOCOLOU-SPC

\$ 900

Indoor

6 ft	PT6CLOCOLIN-SPC
7 ft	PT7CLOCOLIN-SPC
8 ft	PT8CLOCOLIN-SPC

\$ 970



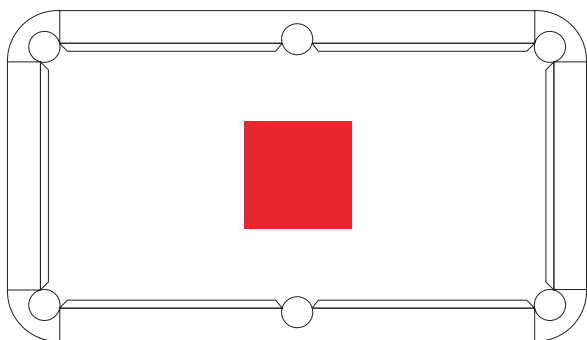
6. Cloth • Printed logo or image

Add your logo printed on the cloth.

Maximum dimensions: 50x50 cm | 19.7x19.7 in.

PTLOGOCLOTH-CST

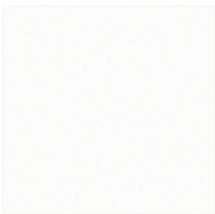
\$ 1,450



RS-Barcelona Colour Chart

The colours and textures used by RS Barcelona express timelessness and harmony. With striking purity and sensuality, they enhance the beauty of our items, allowing you to combine tones and create your own colour palette.

Metal



White

RAL 9016
Textured



Black

RAL 9005
Textured



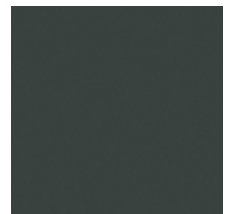
Red

RAL 3020
Textured



Blue

RAL 5001
Textured



Green

NCS S7005-B80G
Textured



Grey

RAL 7044
Textured



Yellow

RAL 1016
Textured



Terracotta

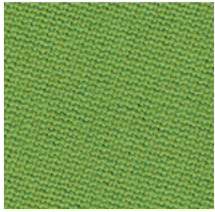
NCS S 4040Y80R
Textured



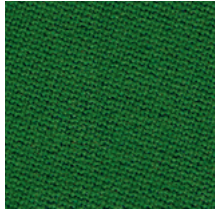
Inox

Diagonal Indoor Pool Table Cloth Colour Chart

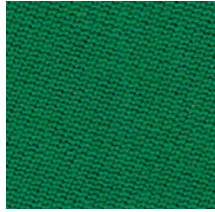
Gorina Basalt Cloth



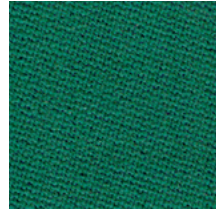
12-Old green



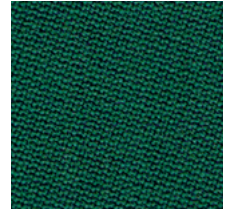
1-English green



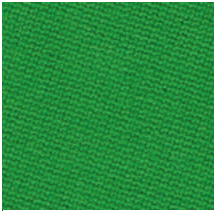
2-Yellow green



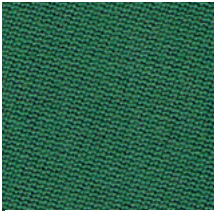
3-Blue green



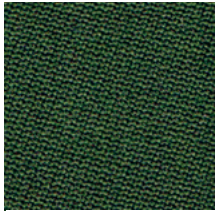
G-Dark green



J-Apple green



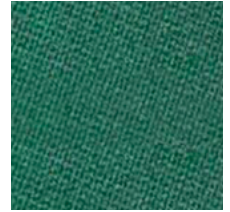
D-Empire green



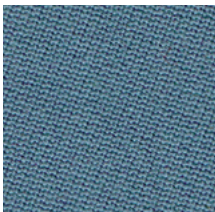
K-Kaki



L-Lobat



14-Spruce



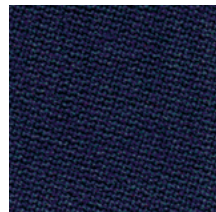
A-Slate



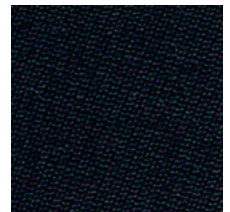
T-Sky blue



6-Ultramarine



16-Navy blue



17-Black

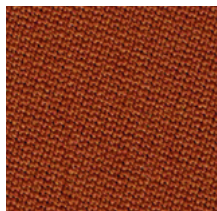
Gorina Basalt: 85% worsted wool and 15% nylon.

Diagonal Indoor Pool Table Cloth Colour Chart

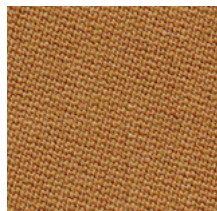
Gorina Basalt Cloth



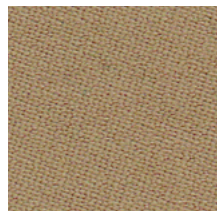
M-Orange



N-Rust



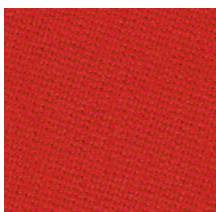
9-Gold



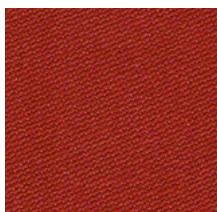
13-Camel



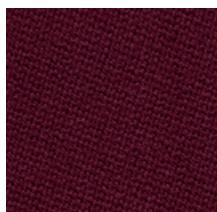
H-Chocolate



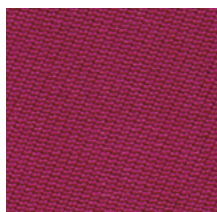
7-Red



10-Burgundy



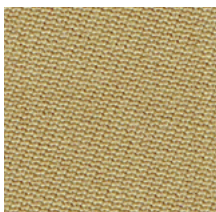
F-Wine



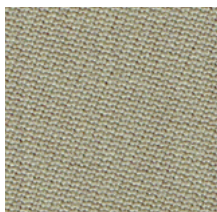
U-Fuchsia



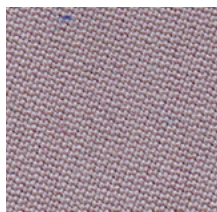
18-Purple



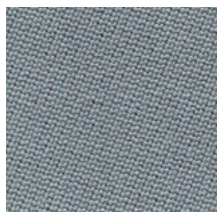
B-Beige



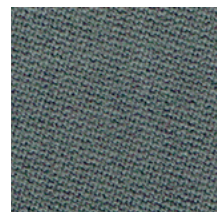
R-Sand



19-Light pink



8- Light grey



P- Dark Grey

Gorina Basalt: 85% worsted wool and 15% nylon.

Diagonal Indoor Pool Table Cloth Colour Chart

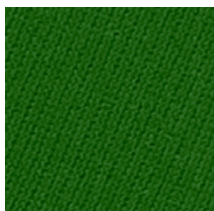
Simonis 860



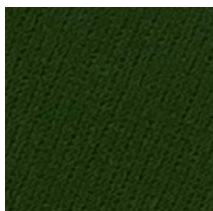
Yellow green



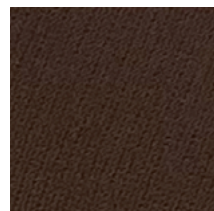
Blue green



Apple green



English green



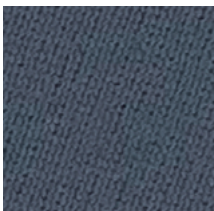
Olive green



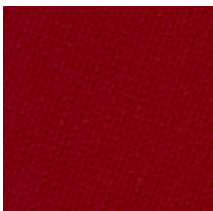
Electric blue



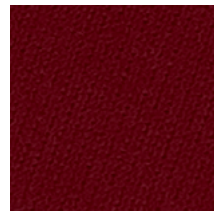
Tournament blue



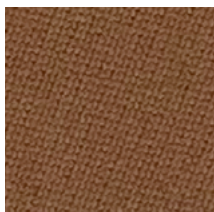
Powder blue



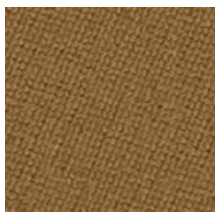
Red



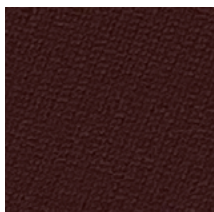
Burgundy



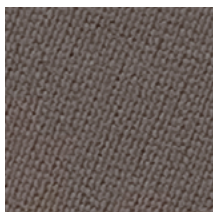
Camel



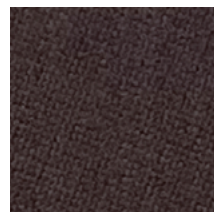
Gold



Chocolate



Grey

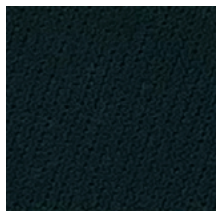


Slate Grey

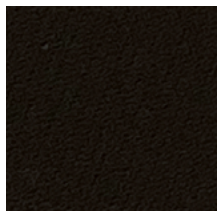
Simonis 860: 90% worsted wool and 10% nylon.

Diagonal Indoor Pool Table Cloth Colour Chart

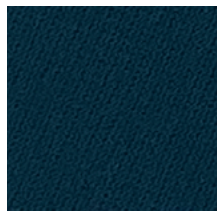
Simonis 860



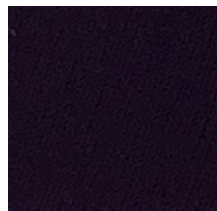
Dark green



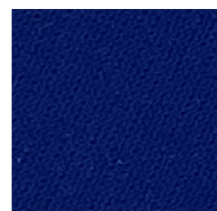
Spruce



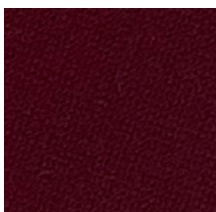
Petroleum blue



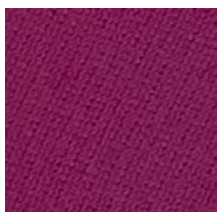
Marine blue



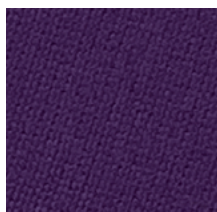
Royal Blue



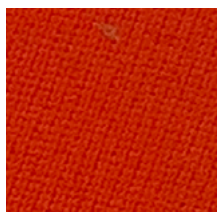
Wine



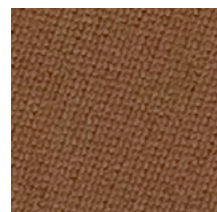
Fushia



Purple



Orange



Camel

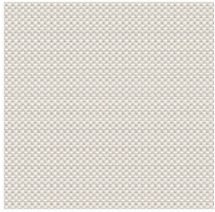


Black

Simonis 860: 90% worsted wool and 10% nylon.

Diagonal Outdoor Pool Table Cloth Colour Chart

Sunbrella



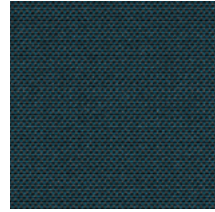
White linen



White 300



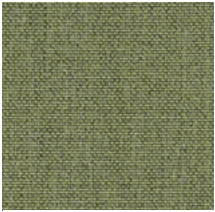
White 140



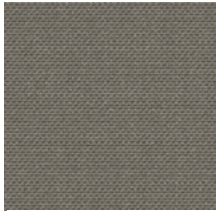
Whale



Tonka



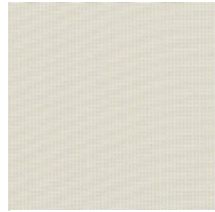
Pistachio



Nature grey 300



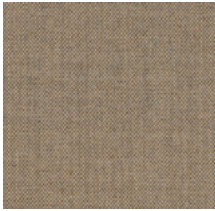
Nature grey 140



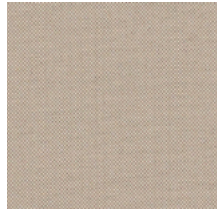
Nature



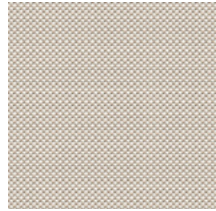
Linen chalk 140



Heather grey



Heather chalk



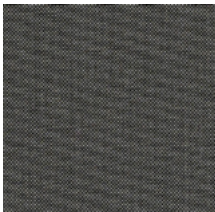
Heather beige 300



Heather beige 140



Grey chiné



Dark Taupe



Charcoal chiné



Carmine



Carbon sky

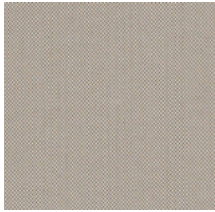


Carbon beige

Sunbrella: 100% acrylic.

Diagonal Outdoor Pool Table Cloth Colour Chart

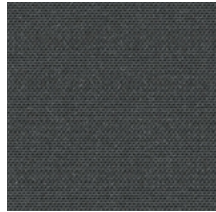
Sunbrella



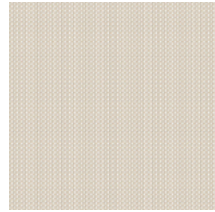
Taupe chalk



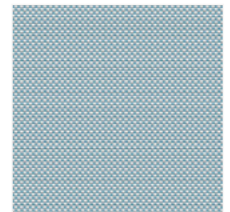
Sooty



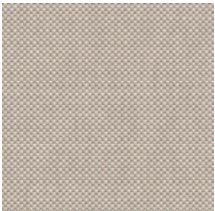
Shadow



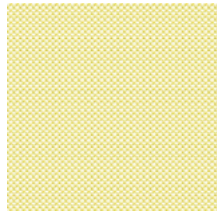
Sealant



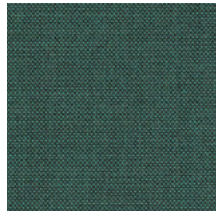
Pool



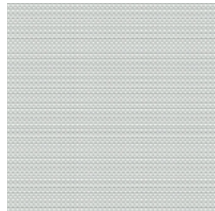
Linen Chalk 300



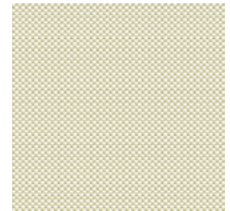
Lemonade



Ivy



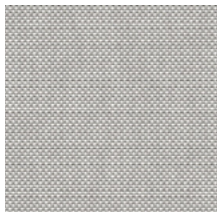
Iodine



Helleborus



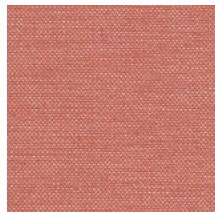
Graumel chalk



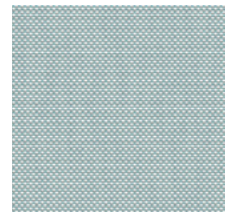
Graumel



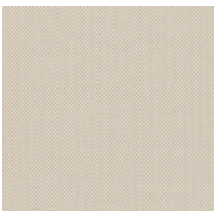
Frosty chiné



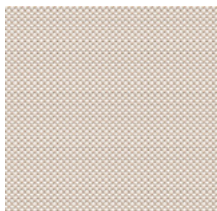
Flamingo



Drizzle



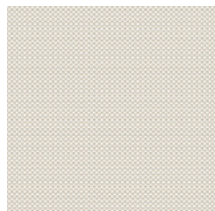
Canvas



Antique white



Amber

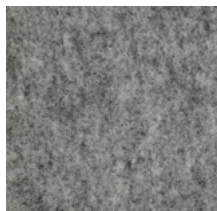


Alabaster

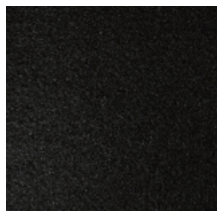
Sunbrella: 100% acrylic

Track Shuffleboard Lining Colour Chart

Texfel Eco 9



Grey
Texfel Echo9 GM08



Black
Texfel Echo9 NO00



Green
Texfel Echo9 VR07



Blue
Texfel Echo9 AZ05



Light brown
Texfel Echo9 BE07



Brown
Texfel Echo9 BE32

Texfel Eco 9: 100% PET (60% recycled).

Product Customisation Terms and Conditions

- All orders must be confirmed in written form with the product customization form filled.
- Customer must provide all images/logos in a vectorized format (.ai or .eps).
- Customer must have the appropriated authorization of use for the images/logos provided.
- RS Barcelona will not be responsible for penalties derived from copyrights.
- Lead time for this kind of customised products is 4-8 weeks from order confirmation (depending on the customisation options requested).
- SCREEN PRINT is a printing technique that allows for high resolution over small spaces.
- Each football table includes 11 players + 1 spare player per team (24 players in total). The RS MAX football table includes 28 players + 2 spare players per team (60 players in total).
- Order cancellations after 48 hours of placement will incur a cancellation fee of 10% of the order value.
- All prices are Public Price in € and EXW Barcelona.
- VAT is not included.

Lead time

Standard finishes (-std codes): 2-3 weeks.

Custom finished from customisation guide (-cst codes): 4-8 weeks.

Special products specially made for you (-spc codes): ask us availability and lead time.
